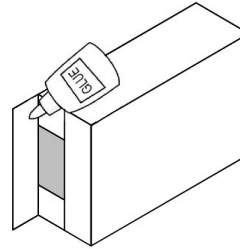


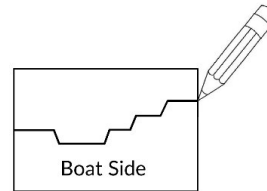
Make a model of the Mayflower or Speedwell!

We are going to build a ship like the Mayflower out of an empty cardboard box.

Take your empty box and glue the end closed.



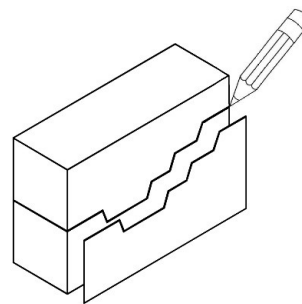
Now take a piece of card roughly the same size as the side of the box and draw the shape of an old sailing ship.



Make sure the shape reaches both ends of the card.

This will be your template for making your box into a ship so cut it out.

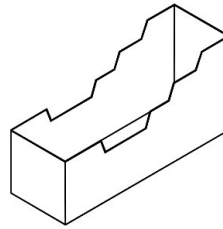
Use your template to draw your ship shape on each side of your box.



Remember to make sure that the sides match.

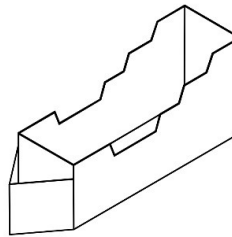
Now join the lines up along the ends of the boat to make the front and back. These lines should be straight and not at an angle.

Cut along the drawn line and you have the basic boat hull.



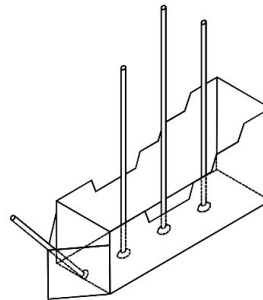
Add a rectangle of card folded in half to make a pointed bow.

Now you can paint your ship.

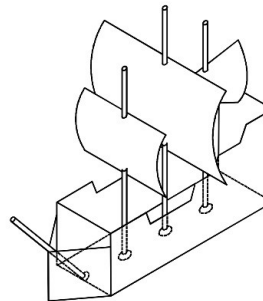


Use bamboo skewers for the masts – the main mast should be as long as the ship with the fore and aft masts slightly smaller.

Use blu tack or similar to fix these upright in the ship's hull.



Make the ship's sails from paper, square sails for the foremast and main mast and a triangular sail for the aft mast.



You now have a model ship for your pilgrims. Why not put some little people in it, with their supplies ready for their journey.