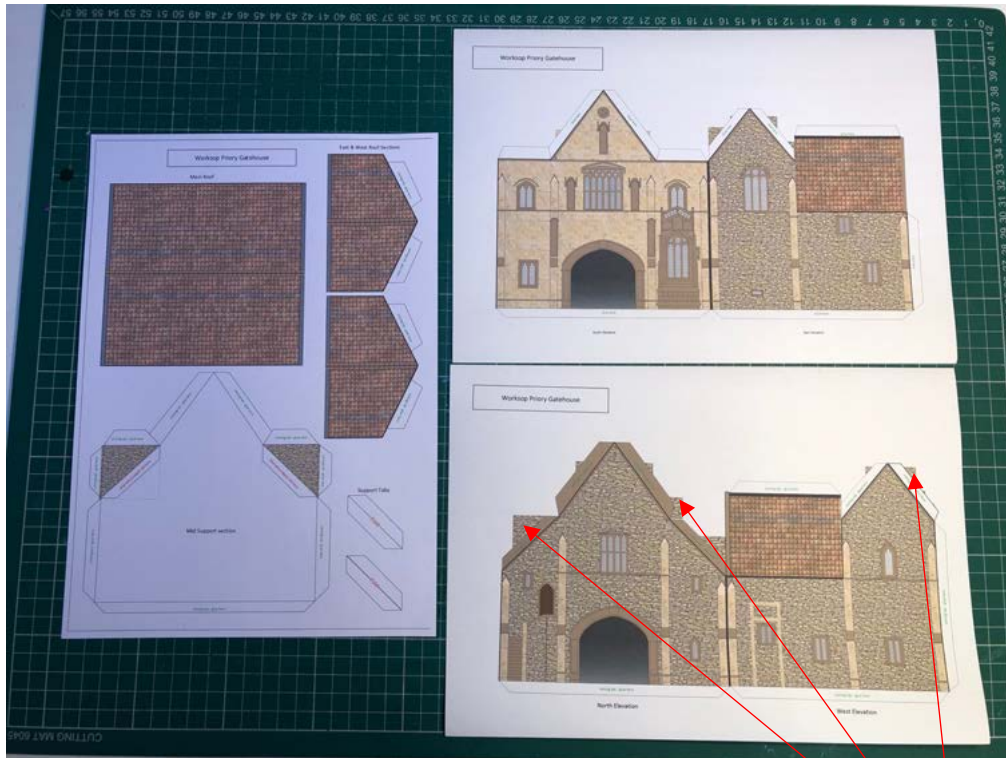
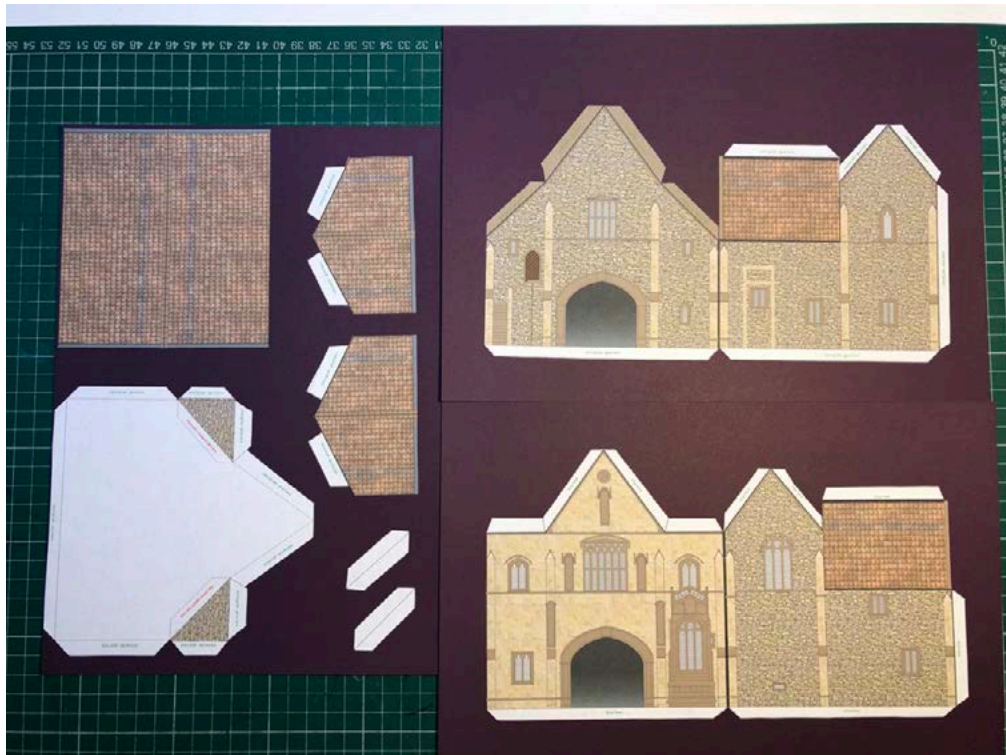


Workshop Priory Gatehouse Model

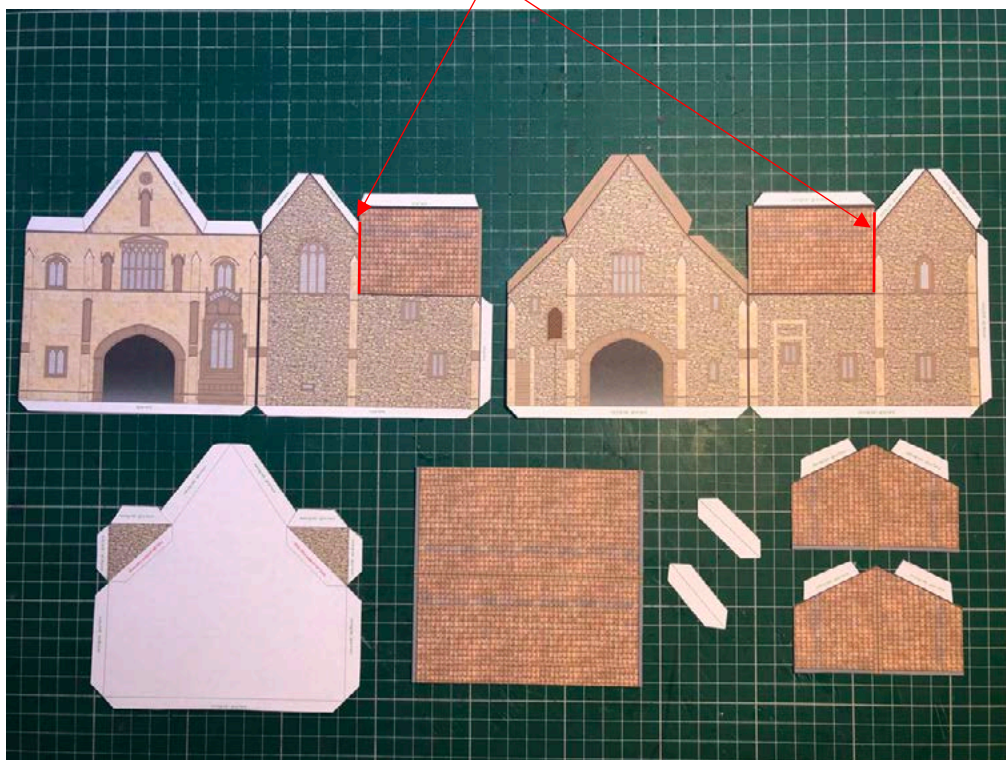
Print all three sheets and glue to suitable card



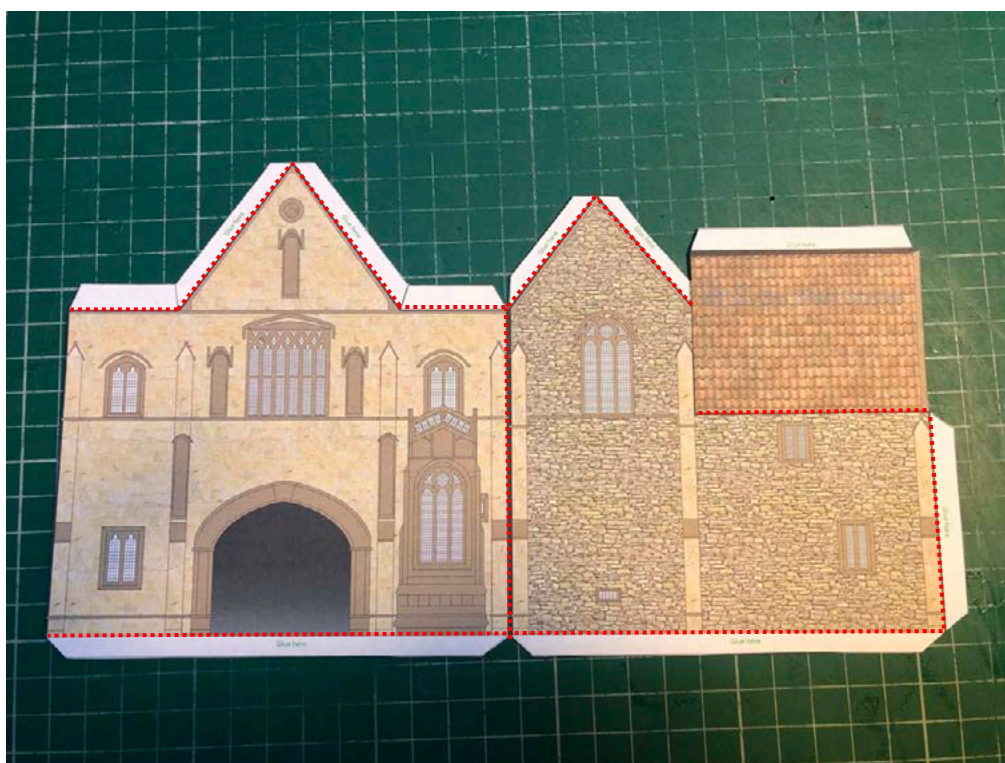
Carefully cut out all pieces. Note: remove elements of overprinting beyond the tabs.

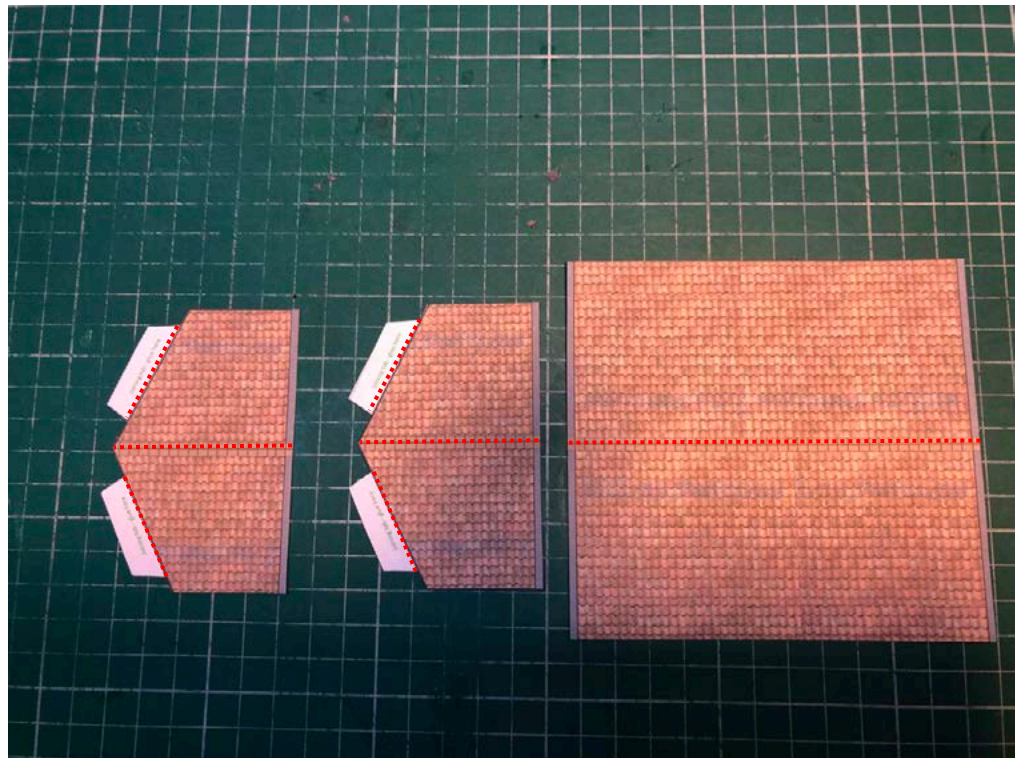
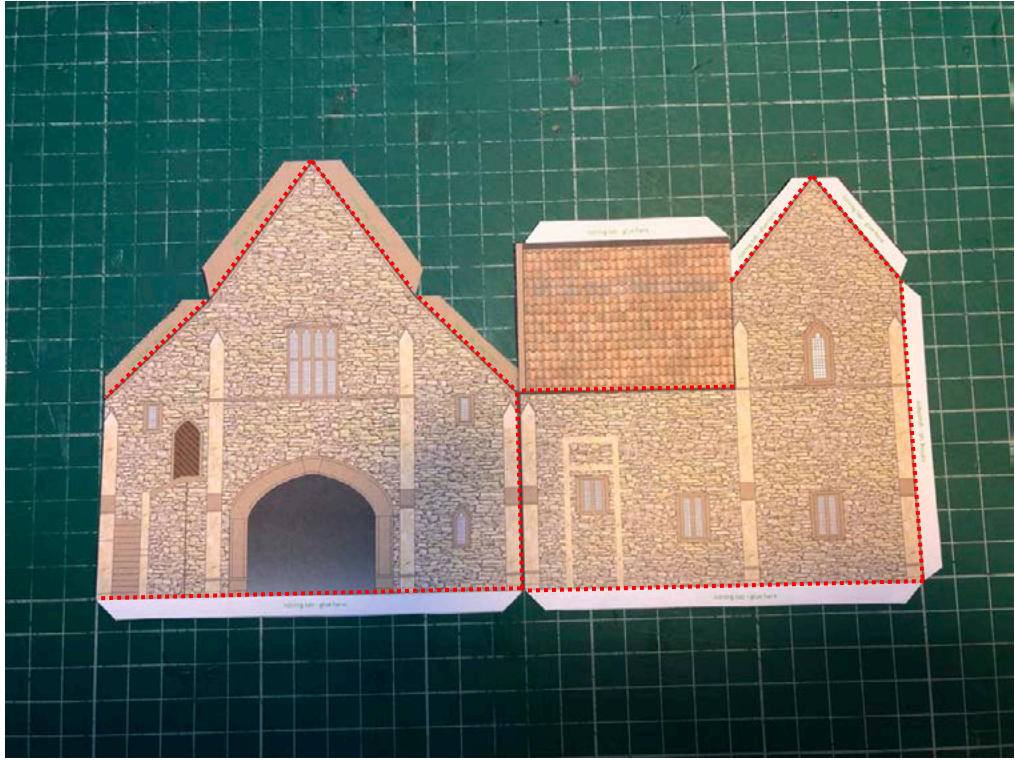


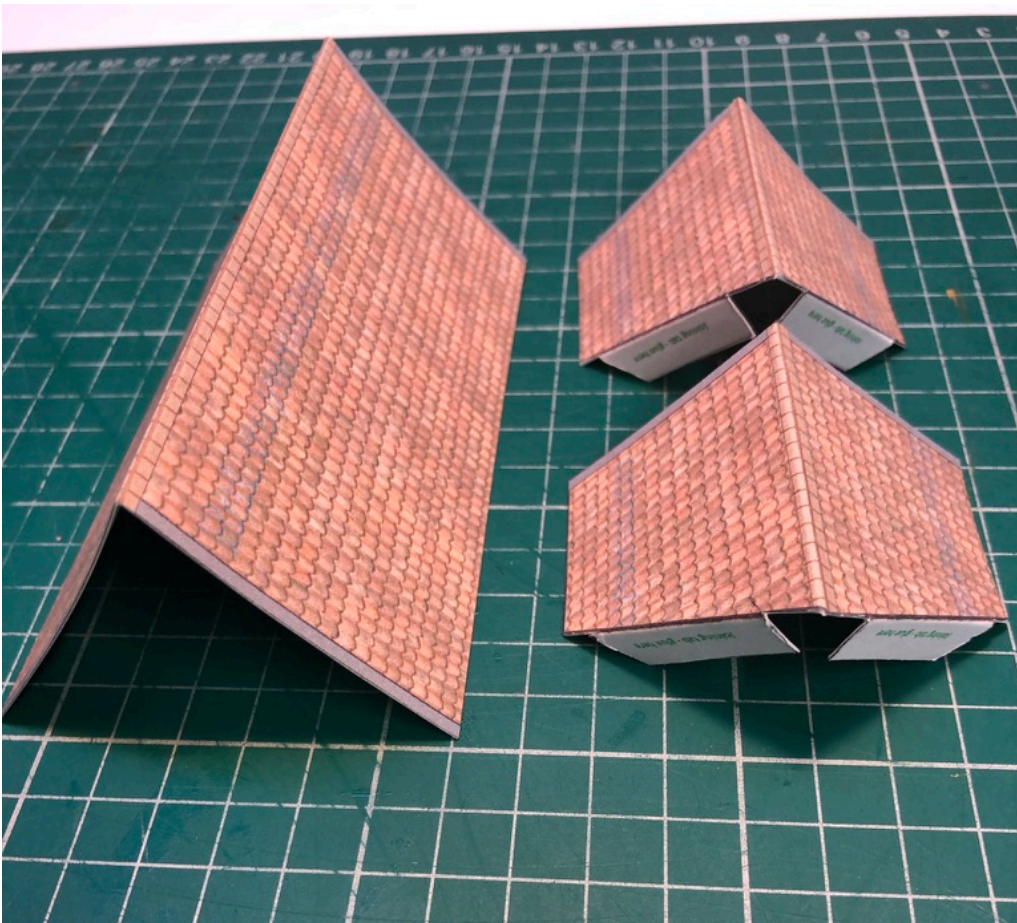
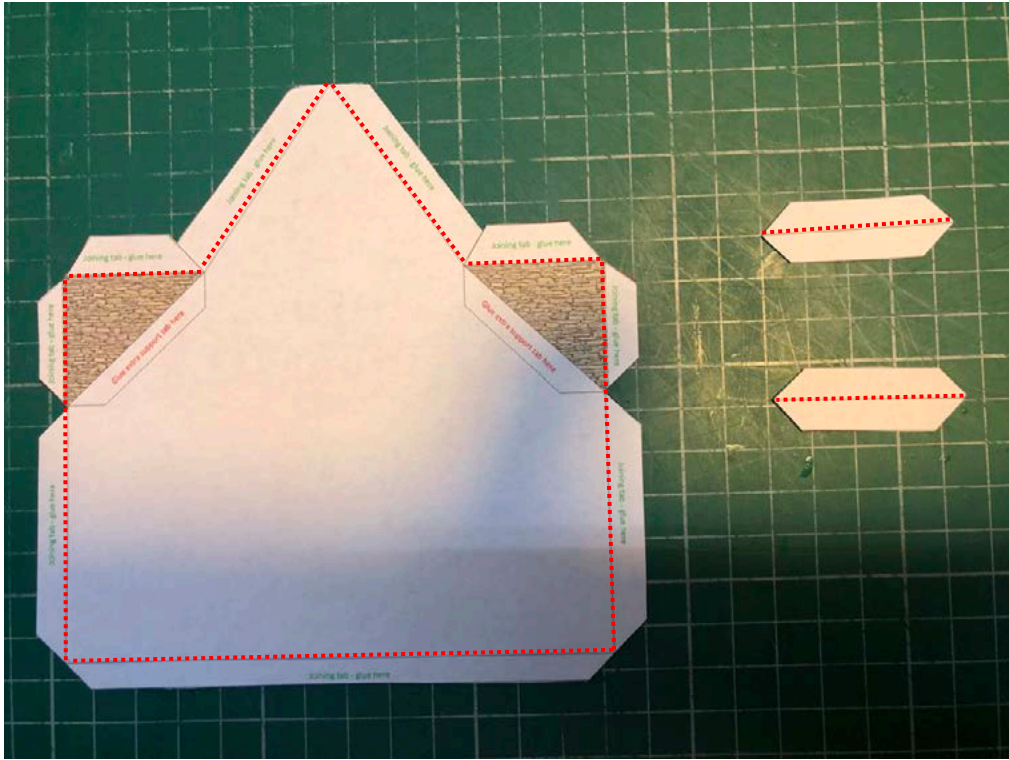
Cut down to where red lines finish



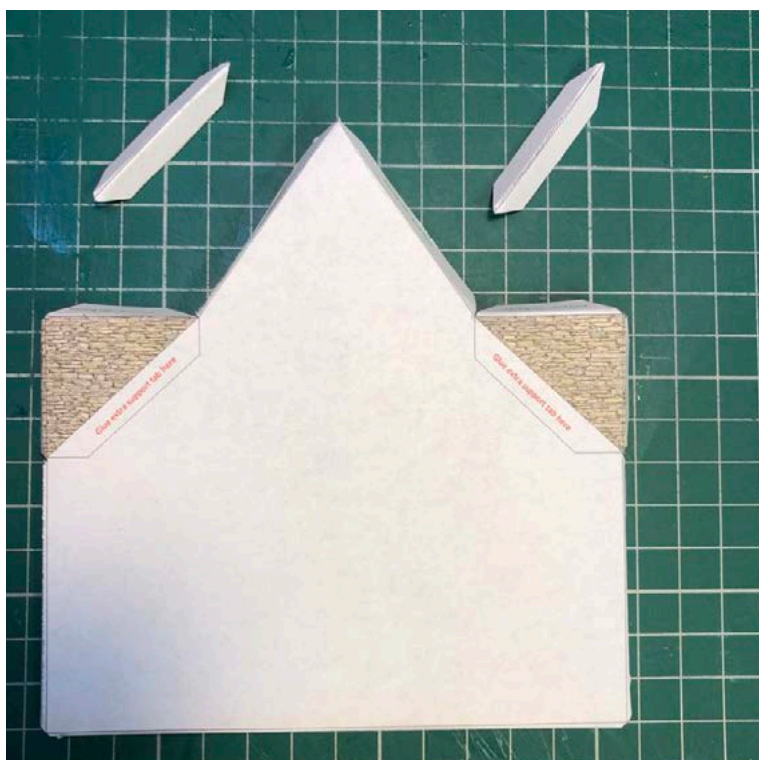
Red dotted marks show fold lines







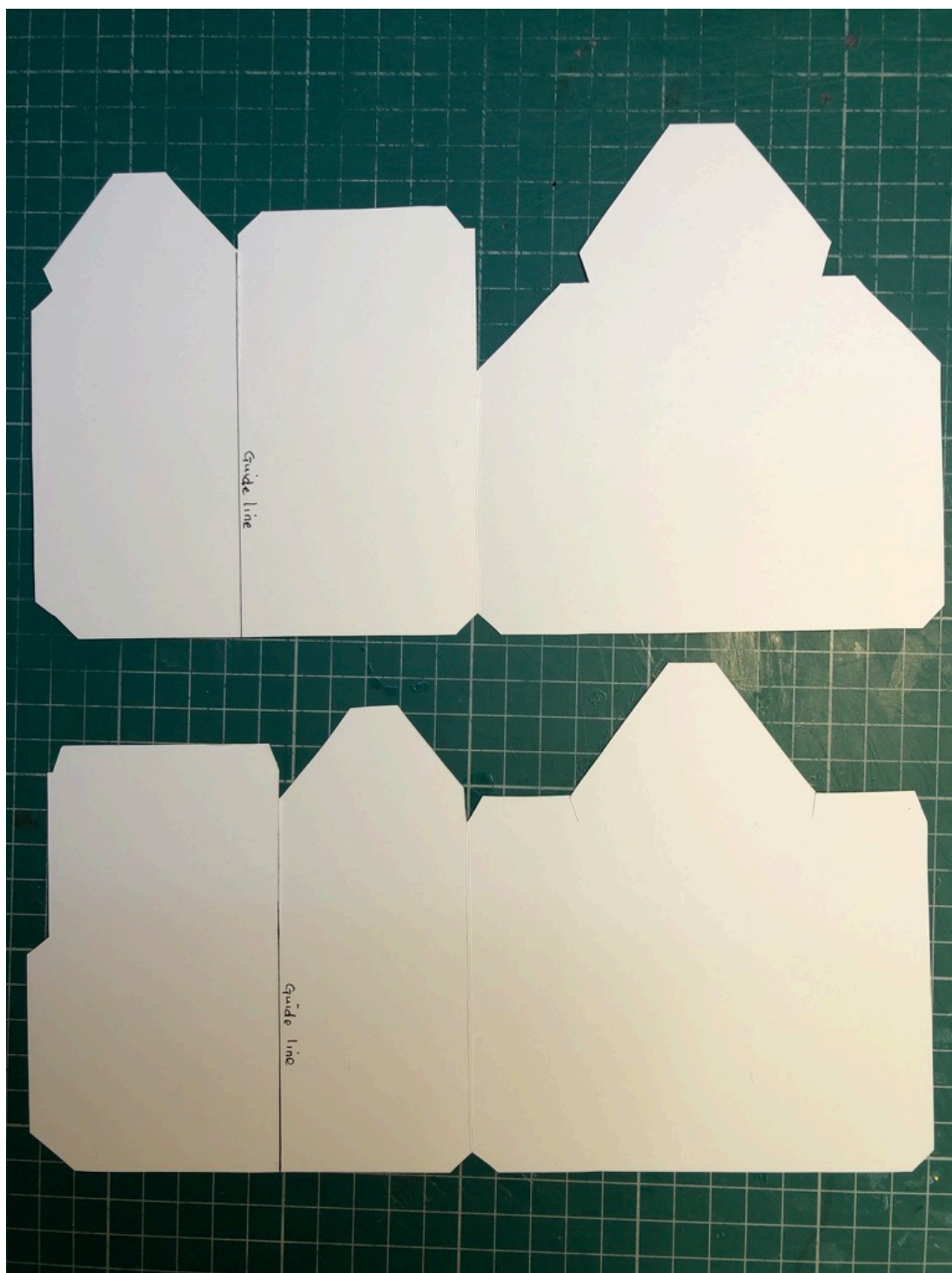
Fold roof supports and apply glue to location shown on the mid wall section



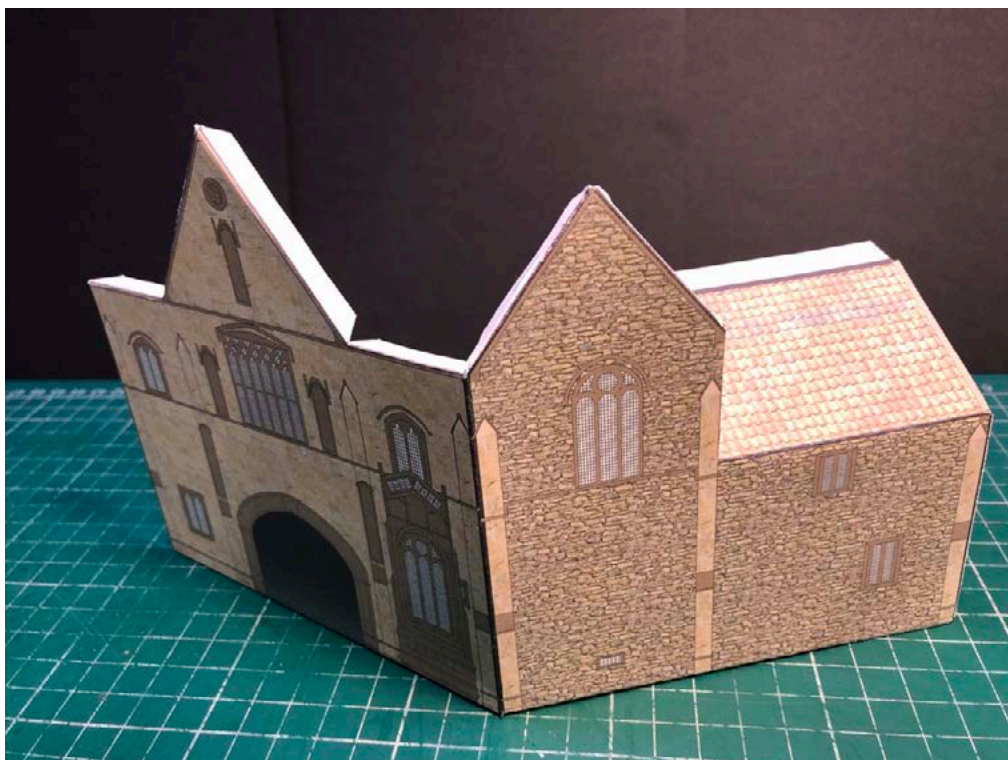
The sticking out tabs will provide support for the lower-level roof.



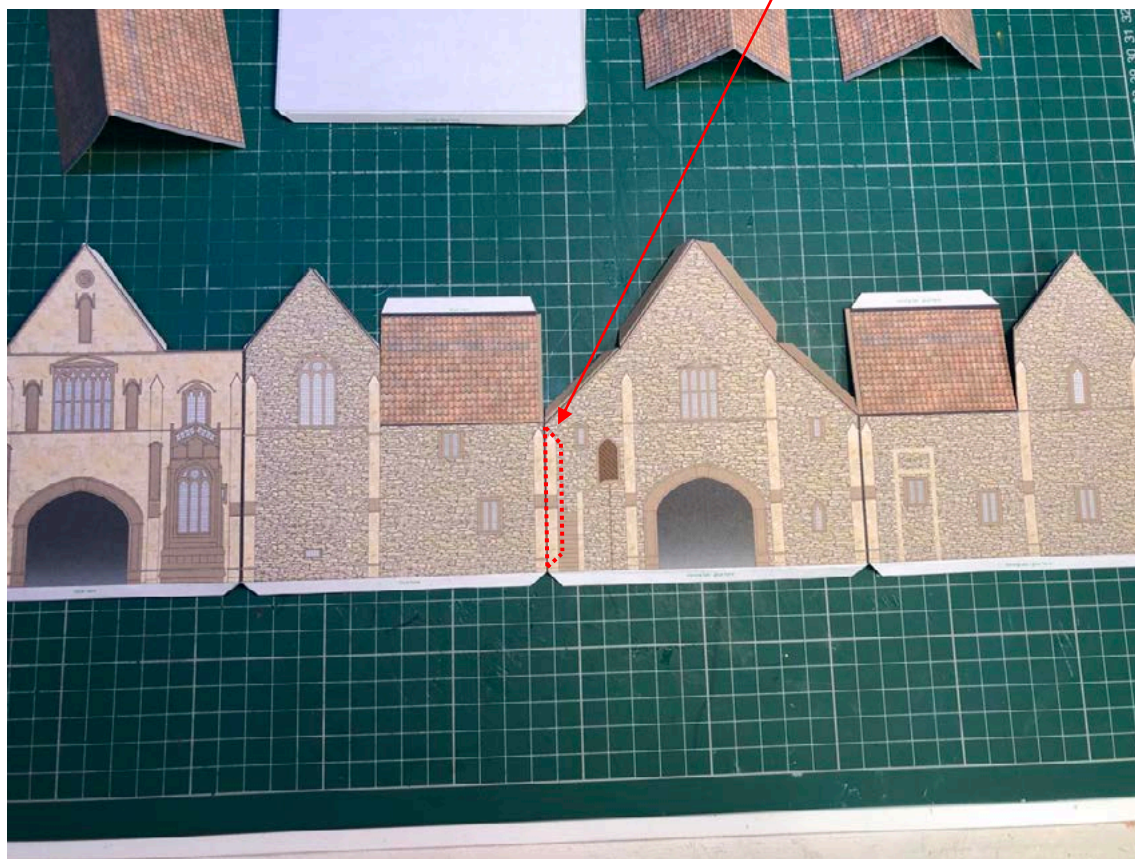
Carefully draw a “guide-line” as shown on the rear face of each elevation to assist in positioning the mid-wall section.



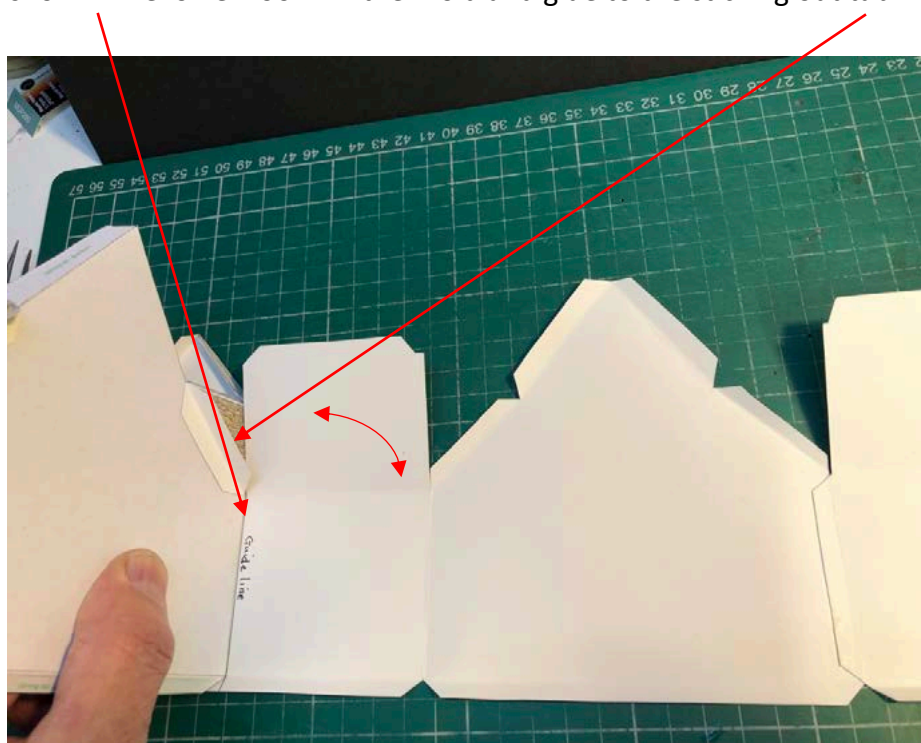
When folds are made each elevation should look like this.



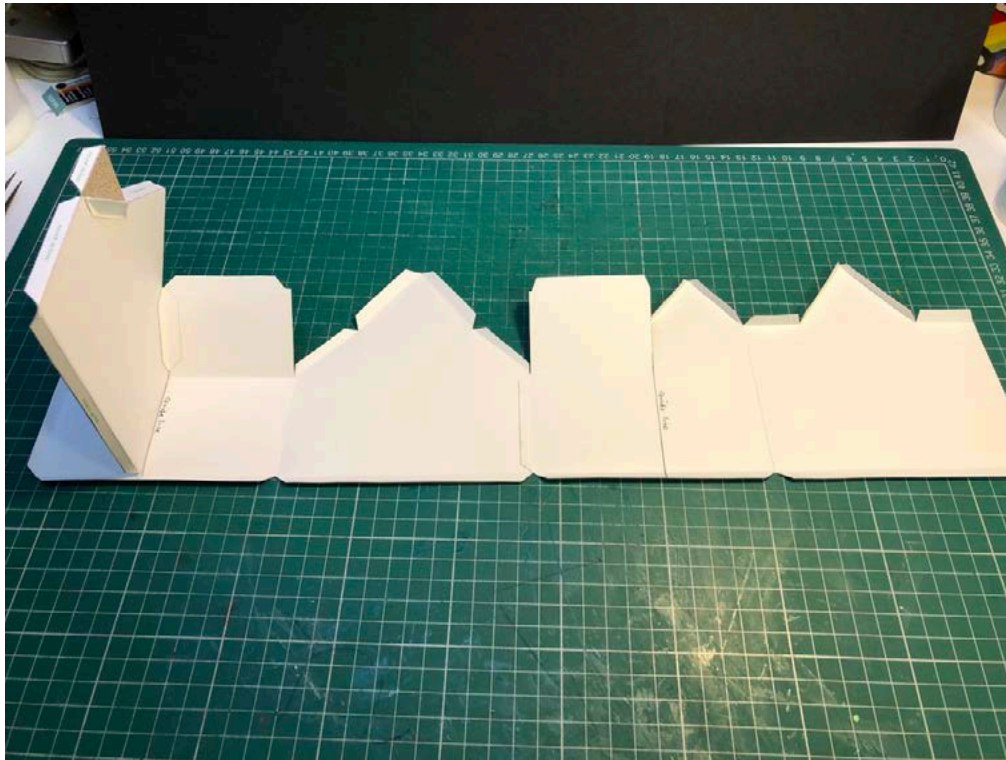
Carefully glue the two main elevations together with the tab behind.
Try to ensure both sections are parallel.



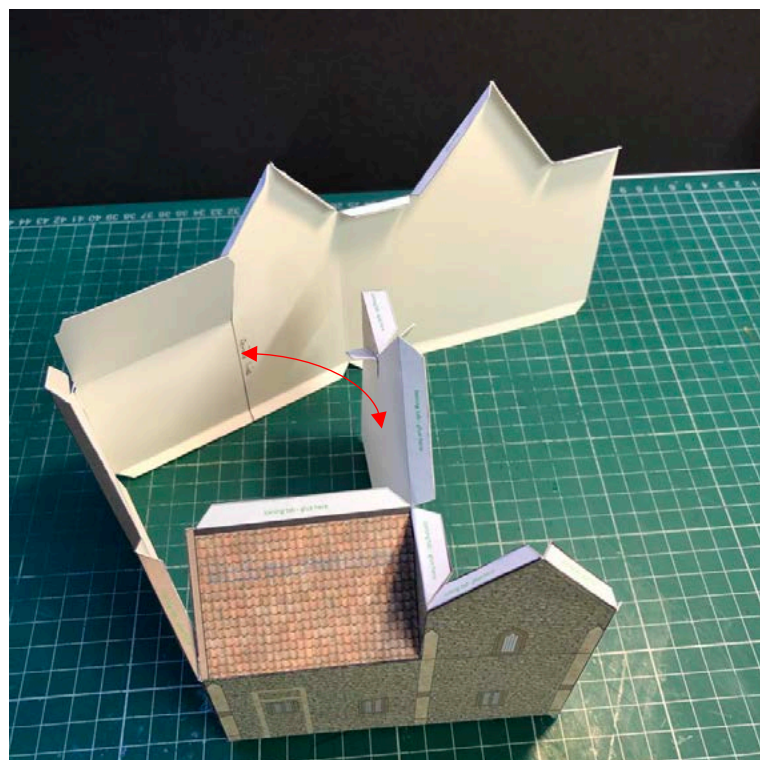
When the glue has dried on the above, turn over and apply glue to the mid-section wall. Then stick to the guide line as shown. The lower roof will then fold and glue to the sticking out tab.



The reverse side should now look like this.



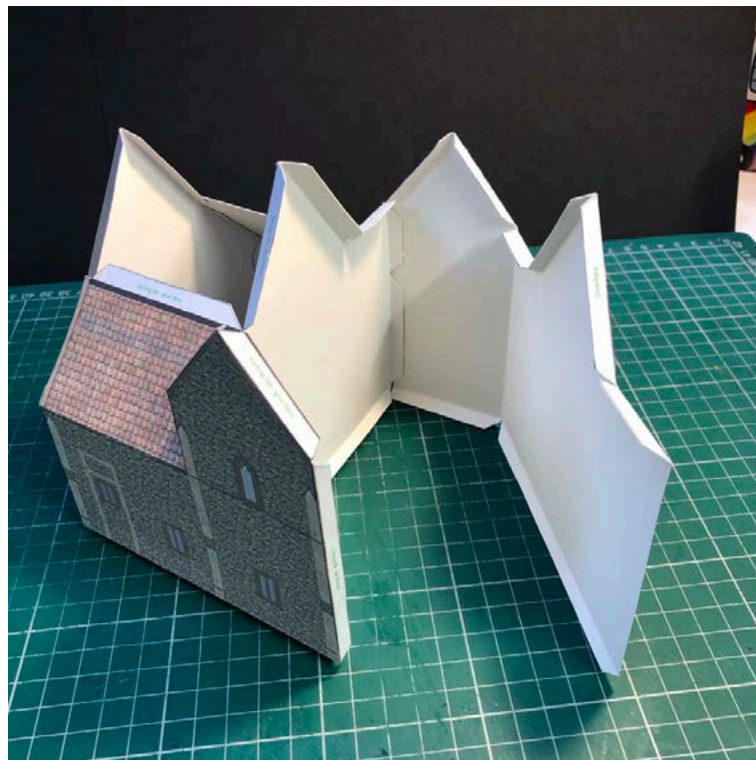
The model can then be folded as shown and the other side fixed to the guide-line



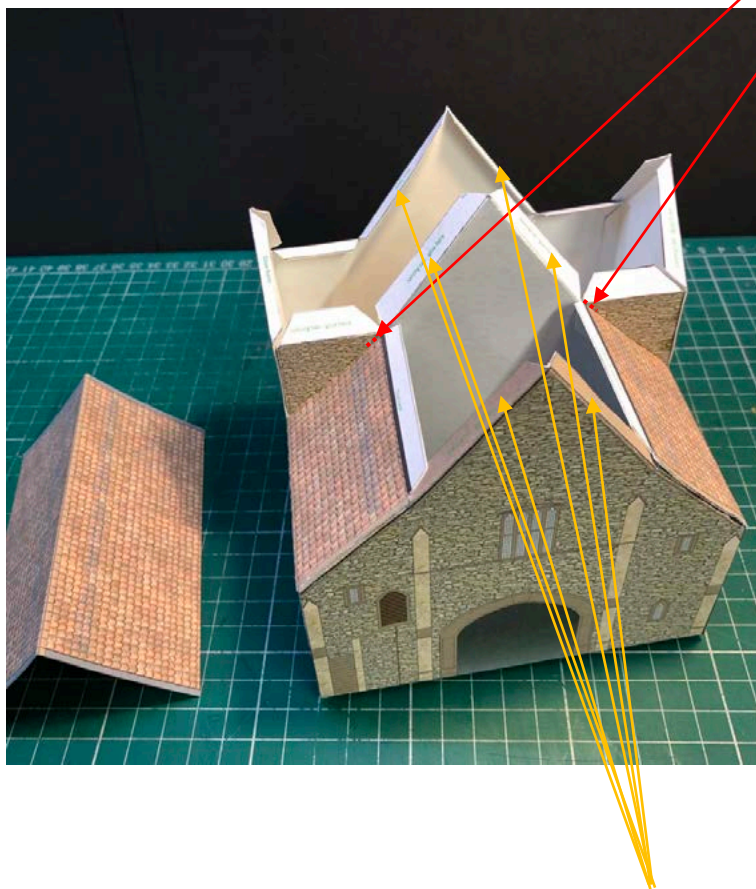
With the lower roof glued to its supporting tabs on each side it should now look like this.



The final joining tab can then be glued and the corner carefully attached squarely.



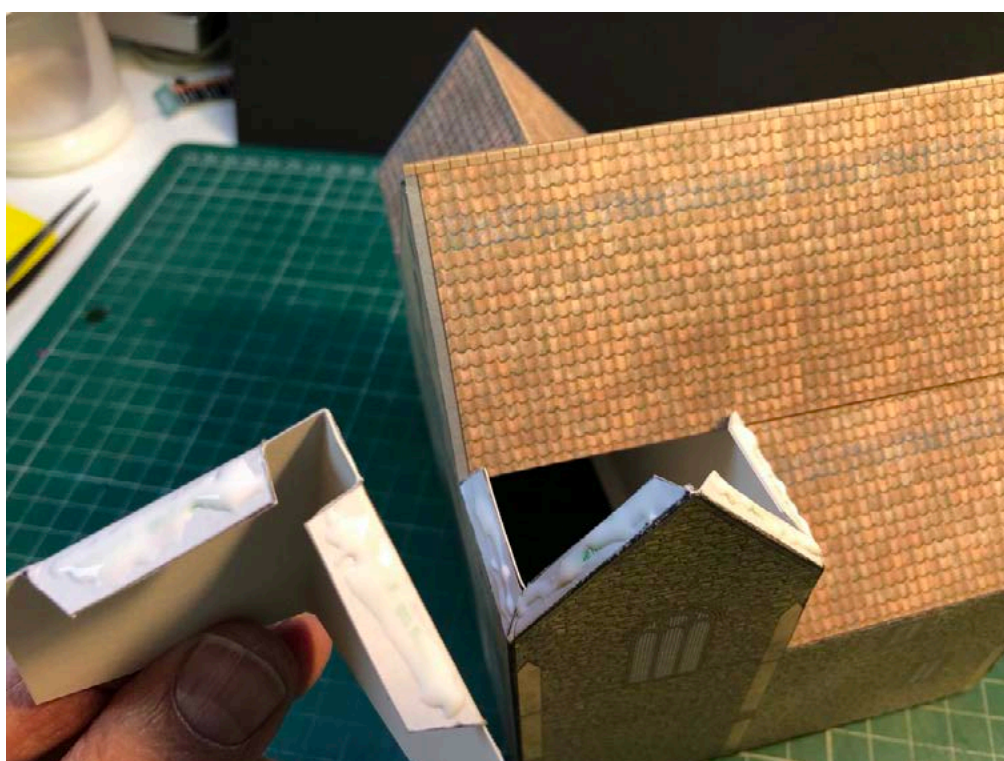
Before attaching the roof, after positioning to check, it may be necessary to make two small nicks as shown to ensure the roof sits properly on its supports.

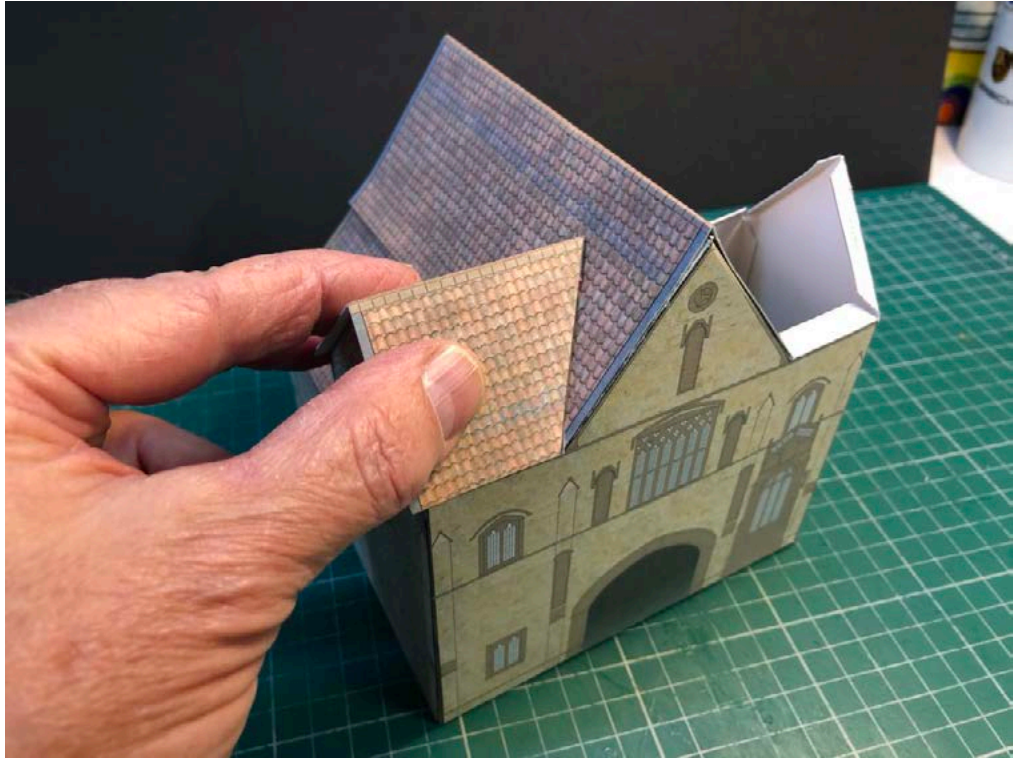


Apply glue to the six tabs before carefully fitting the main roof section as shown.

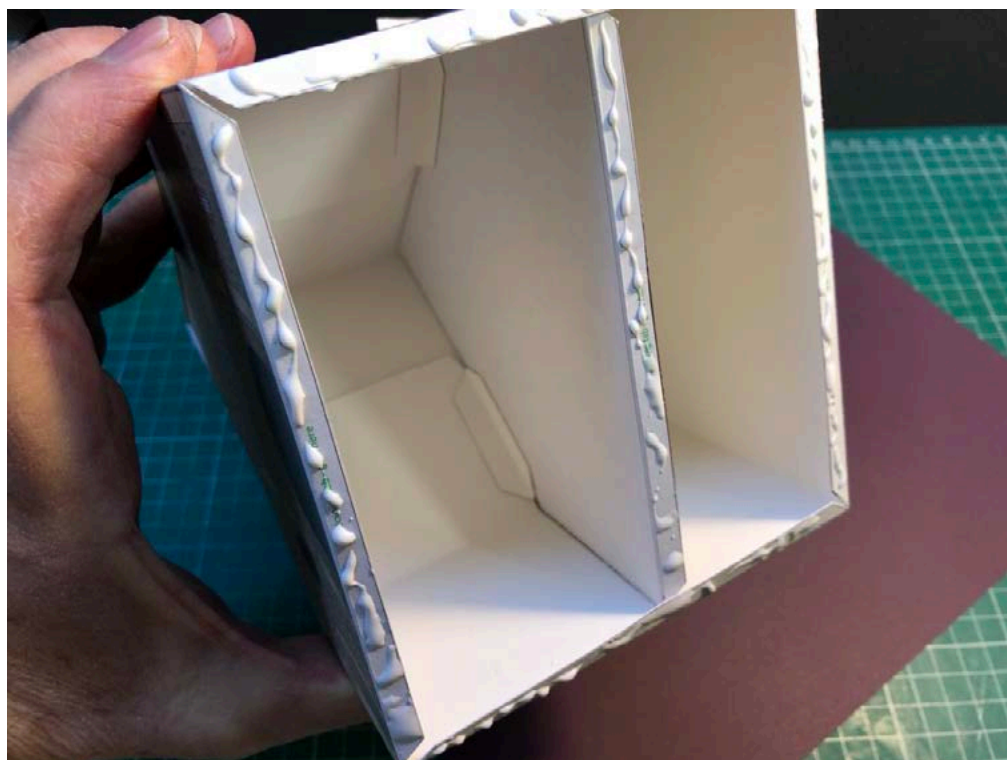


Final sections of the roof can then be attached as shown.





Finally glue the whole model to a suitable base-board and add scenery if you wish!



For the more adventurous modeller!

An additional page of windows can be printed directly on tracing paper and then attached on the inside of the model (after cutting out the necessary holes) to produce a more realistic model which could be lit from inside.

A stone cross and plinth can be made from grey card cut to shape as shown.

Also try adding paths and grass etc!



The trust would love to see photographs of your finished models.