

# Worksop Priory Gatehouse

WORKSOP  
PRIORY &  
GATEHOUSE  
COMMUNITY TRUST



**Worksop Priory  
Gatehouse provides a  
unique opportunity to  
be part of history!**

Presented here is an opportunity for a business or charity to work with the Trust to ensure the future of the Priory Gatehouse and turn it into a stunning office and community asset.

## The Location

Worksop Priory Gatehouse has long been at the centre of a pioneering community who were not afraid to set out on new adventures. From knights who left their mark in the church porch, in the hope that they would return from crusade, to the Pilgrim Fathers, who set out in hope of religious freedom.

Today, a new pioneer is needed to work with the Worksop Priory and Gatehouse Community Trust to breath new life into this ancient monument. A business or charity who has the vision to make this town landmark a stand out location.

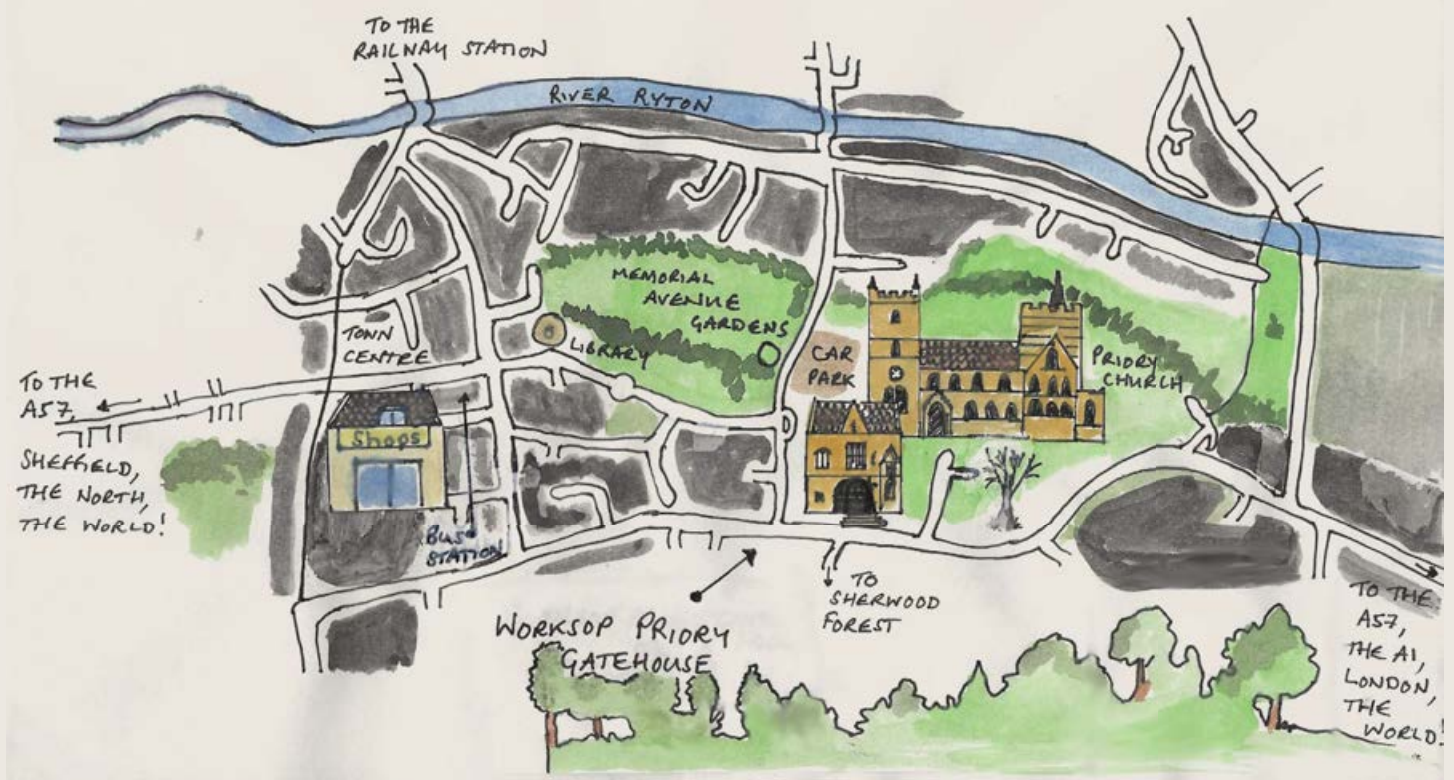
The Gatehouse is situated in Worksop in Nottinghamshire, just to the north of Sherwood Forest. The town enjoys outstanding transport links and is easily accessible from both the A1 and the M18 via the A57. Worksop boasts a bus station and a railway station and is also close to Robin Hood Airport.

The timing could not be better. Bassetlaw District Council recently announced a new Masterplan for the area publishing that “by 2030 Worksop Town Centre will be the focus of community life, creating a place that serves the everyday needs of residents, whilst also being an exciting destination for visitors from the local area and further afield”.

The Gatehouse is situated just 5 minutes walk from the heart of the town and has a high amount of passing foot fall from people walking into town. There is a nearby car park situated behind the Priory Church.

The gatehouse and church sit within a green area that was once the priory precinct, offering pleasant surroundings.

Showcase your business in a stand out historical location that is central to important transport links including Robin Hood Airport.



## A Brief History of the Gatehouse

The Priory Gatehouse was built in 1314 to house guests to the Priory and Convent of Worksop. It was built using 200 oak trees from nearby Sherwood Forest.

In the mid-14th century, a new shrine was added in the south east corner of the Gatehouse for travellers to use even when the main church was closed; this is still in use today.

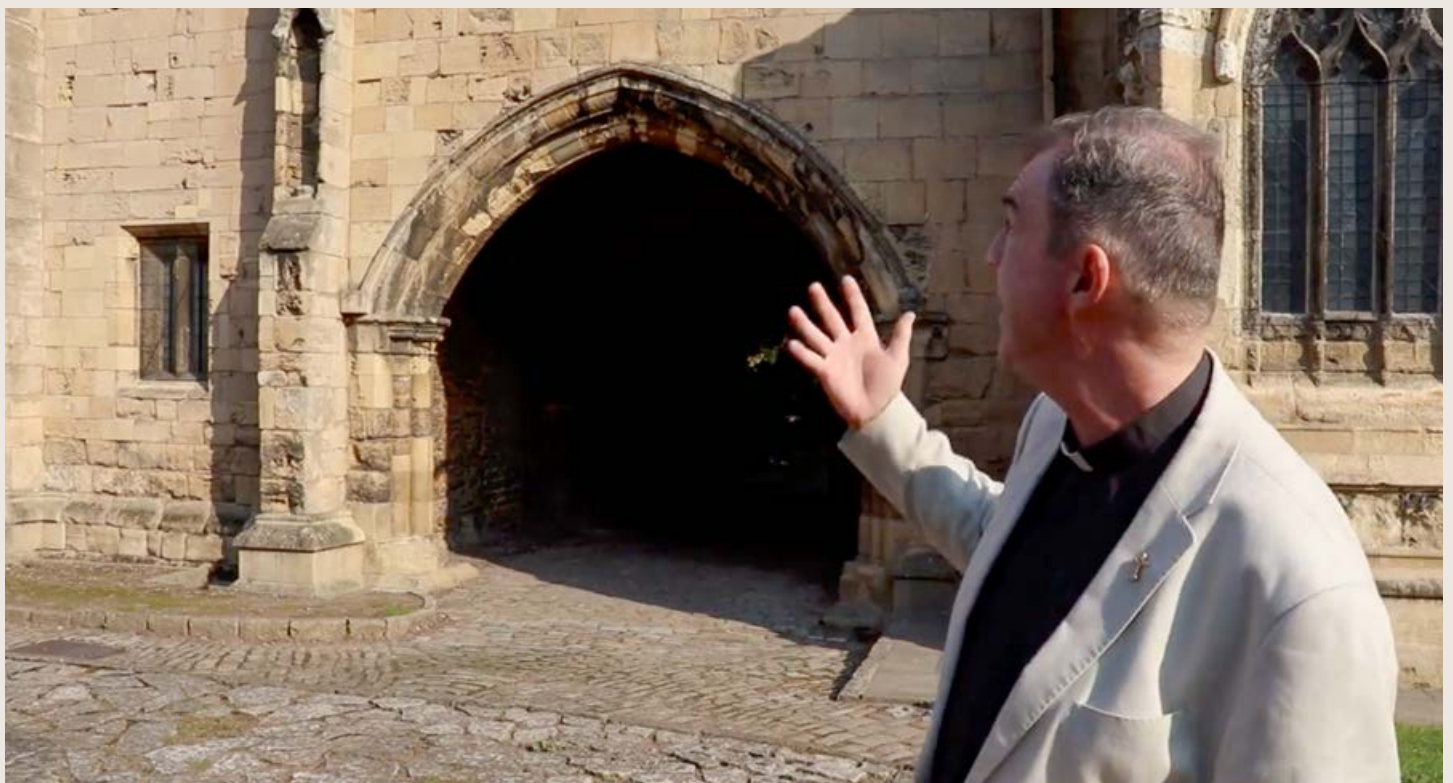
As part of King Henry VIII's Dissolution of the Monasteries the priory was closed, and the Gatehouse became a vicarage. In 1628, it became the first Elementary School in England and was still in use as a school (for poor boys) in 1853.

The Gatehouse was gifted to the local parish in 1909 and various restoration works were completed. In 2011, however, it was placed on the 'At Risk' register. In 2016, funds were provided from several sources to restore the small chapel and shrine; this has since been reconsecrated.

In 2017, a grant from the National Lottery Heritage Fund was given to the Worksop Priory and Gatehouse Community Trust to seek a sustainable use for the Gatehouse.



Father Spicer from Worksop Priory Church talking about the history of the Gatehouse. [Click here to view the video.](#)

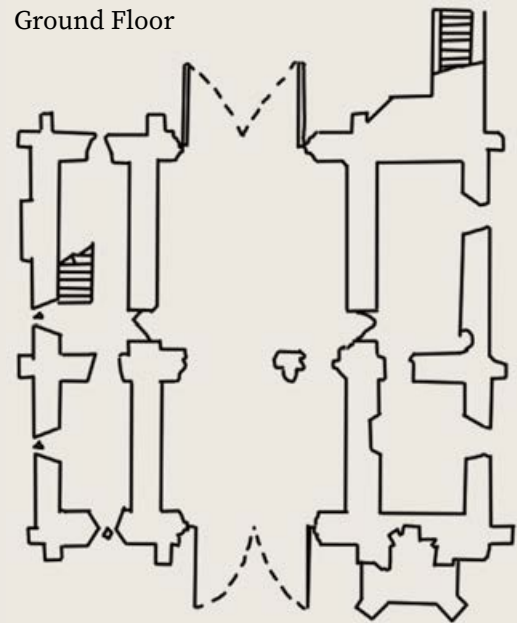


## The Opportunity

Various solutions have been investigated for the Gatehouse, and after public consultation it was decided that the best way forward for the building and for the town was for the upstairs of the building to be offered to a business or charity as office space.

The ground floor would be retained as a multi-purpose community space (although this is not set in stone and could be negotiated with the right business).

Ground Floor



Not to scale



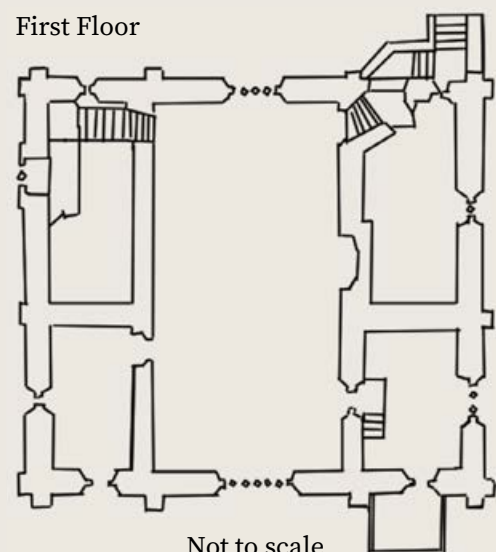
The Gatehouse provides the opportunity to be creative. Being involved at this stage will allow you to be part of the design process.

Options explored for the Gatehouse are the installation of glass doors to enclose the downstairs space and putting in a lift to improve access to the building.

The upstairs area is a large space that would lend itself to a creative open plan layout or being sub-divided into separate zones. There are three other rooms which could be utilised for meeting spaces, kitchen facilities and a server room.

All of the spaces benefit from original architectural features that could be enhanced as part of the re-design process, offering exciting and superior accommodation for any business.

First Floor



Not to scale



360° view of the Great Hall upstairs.  
Please click here to view.



Tree lined approach to the Gatehouse with beautiful stone sets.



View through the Gatehouse to the Market Cross.



Prestigious Location

Exceptional Architectural Features

## The Worksof Priory and Gatehouse Community Trust

The Worksof Priory & Gatehouse Community Trust (WPGCT) was established as a charity in 2009, with the objectives “To preserve for the benefit of the people of Worksof and for the Nation and of the Church, the natural, architectural and constructional heritage of the Worksof Priory and Gatehouse together with all associated buildings, structures, surrounding lands and such other natural, historical, architectural and constructional heritage as may exist in and on surrounding lands of the Worksof Priory and its Gatehouse.”

Please visit our website to find out more about the project: [www.wpgct.org.uk](http://www.wpgct.org.uk)

Or email us:  
[worksofpriorygatehouse@gmail.com](mailto:worksofpriorygatehouse@gmail.com)  
to register your interest or find out more.

## The Gatehouse offers excellent potential

- Excellent road/rail/air transport links
- Affordable local housing
- Other important historical features close by, for example, Creswell Crags, Welbeck, Chatsworth, and Hardwick
- Beautiful adjoining countryside
- The Gatehouse provides an exclusive opportunity for any business looking to relocate.

The Trust is hoping that increased public engagement, a focused business plan, and a partnership with an interested business party will help them secure the next stage of funding for the project.

Funded by



Funded by



Produced in partnership with:

